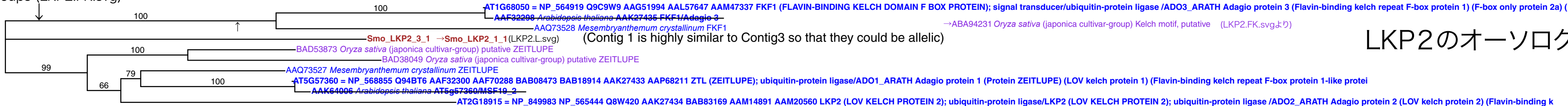


LKP2 (AT2G18915): global tree  
 File name:LKP2.LFK.njtree1.svg  
 560 aa residues 10 OTU included.  
 Partial tree using LOV, F-box and Kelch domain  
 Assemble Job Id:a8jywL  
 Tree job id: NcGEGu  
 BP values out of 100  
 Analyzed by thirai@nibb.ac.jp  
 Date: Thu Jun 29 10:49:32 JST 2006

# all genes containing the 3 domains (LOV, F-box, and Kelch domain)

outgroups (LKP2.FK.svg)



## LKP2のオーソログ