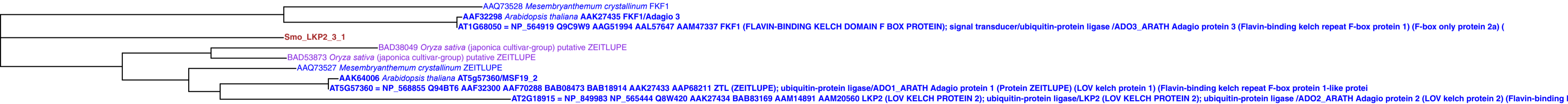


LKP2 (AT2G18915): partial tree
File name:LKP2.LFK.mltree1.svg
560 aa residues 10 OTU included.
Partial tree using LOV, F-box and Kelch domain
Assemble Job Id:a8jywL
Tree job id: NcGEKu
BP values out of 100
Analyzed by thirai@nibb.ac.jp
Date: Thu Jun 29 10:49:32 JST 2006

all genes containing the 3 domains (LOV, F-box, and Kelch domain)



10.000