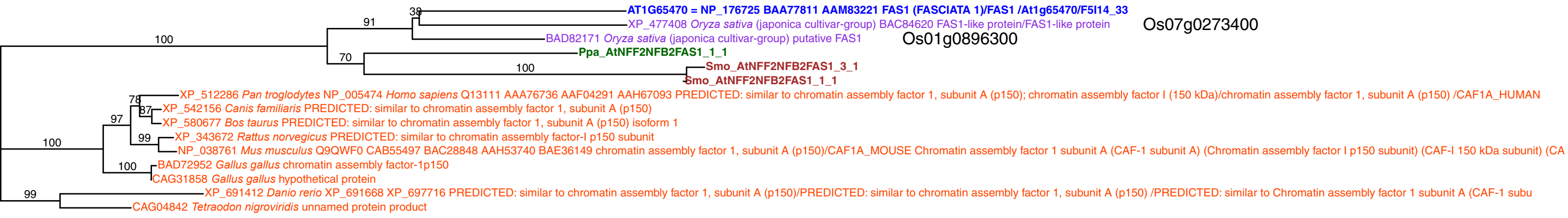


NFF2NFB2FAS1.34(At1g65470): global tree
 File name: NFF2NFB2FAS1.34.njtree2.svg
 147 aa residues 15 OTU included.

Assemble Job Id: q6bUKa
 Tree job id: 0IUcRI
 BP values out of 100
 Analyzed by mobara@nibb.ac.jp
 Date: Sat May 27 09:04:36 JST 2006

entries deleted from the alignment
 NP_915153 *Oryza sativa* (japonica cultivar-group) BAC06267 P0696G06.24/P0696G06.24
 gi|2190539|gb|AAB60903.1| F5I14.2 gene product [Arabidopsis thaliana]
 gi|4887624|dbj|BAA77812.1| FAS1 [Arabidopsis thaliana]
 gi|3335354|gb|AAC27156.1| This gene is continued from gene F5I14.1 from BAC sequence gb|AC001229 from A. thaliana. EST gb|AA58
 gi|2190555|gb|AAB60919.1| F5I14.1 gene product [Arabidopsis thaliana]
 gi|34907614|ref|NP_915154.1| putative FAS1 [*Oryza sativa* (japonica cultivar-group)] >gi|21952853|dbj|BAC06268.1| putative FAS1
 lcl|Smo AtNFF2NFB2FAS11167281253 1 unnamed protein product
 lcl|Smo AtNFF2NFB2FAS11167281252 1 unnamed protein product

Os01g0896300



Os07g0273400

Os01g0896300

0.100