

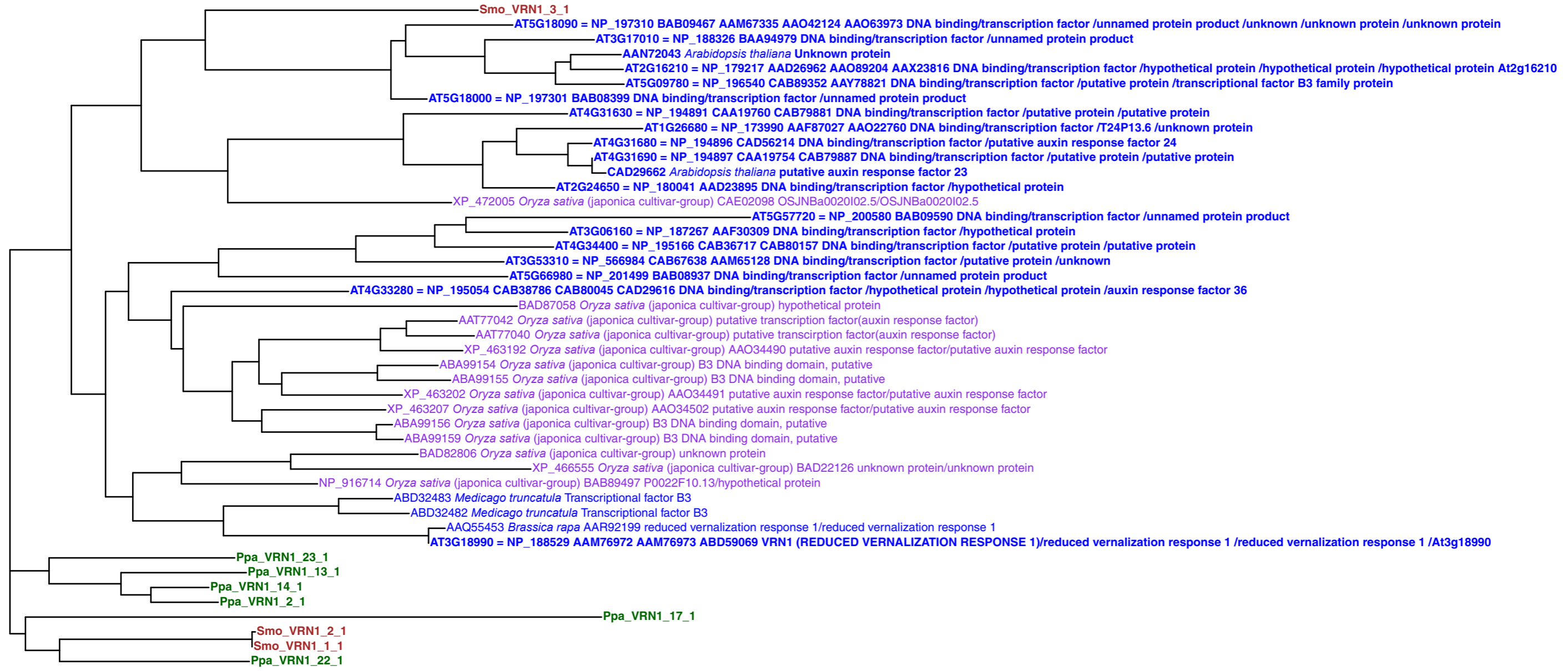
VRN1(At3g18990) global tree
 File name: VRN1n.mltree0.svg
 109 aa residues 45 OTU included.
 Results of partial trees included.
 Assemble Job Id: 00OyJz
 Tree job id: mb8ofb
 BP values out of 100
 Analyzed by ku-bo@nibb.ac.jp
 Date: Mon Oct 02 14:06:11 JST 2006

BAB01695.1; unnamed protein product [Arabidopsis thaliana]
 NP 564547.1; RTV1; DNA binding / transcription factor [Arabidopsis thaliana] >gi|51972154|gb|AAU15181.1; At1g49
 AAK68808.1; Unknown protein [Arabidopsis thaliana]
 AAD43154.1; Hypothetical Protein [Arabidopsis thaliana]
 Ppa VRN1 1 1
 Ppa VRN1 3 1 NP 200636.1; DNA binding / transcription factor [Arabidopsis thaliana] >gi|10176791|dbj|BAA96919.2; unnamed pro
 Ppa VRN1 4 1 BAB09536.1; unnamed protein product [Arabidopsis thaliana]
 Ppa VRN1 5 1 AAO89205.1; hypothetical protein [Arabidopsis thaliana]
 Ppa VRN1 6 1 NP 199084.2; DNA binding [Arabidopsis thaliana]
 Ppa VRN1 7 1 NP 194892.1; DNA binding / transcription factor [Arabidopsis thaliana] >gi|23296509|gb|AAN13074.1; unknown prot
 Ppa VRN1 8 1 NP 973471.1; DNA binding / transcription factor [Arabidopsis thaliana]
 Ppa VRN1 10 1 NP 187273.1; DNA binding / transcription factor [Arabidopsis thaliana] >gi|6862926|gb|AAF30315.1; hypothetical
 Ppa VRN1 11 1 gi|60594298|pdb|1YEL|A Chain A, Structure Of The Hypothetical Arabidopsis Thaliana Protein At1g16640.1
 Ppa VRN1 15 1 NP 173109.1; DNA binding / transcription factor [Arabidopsis thaliana] >gi|48310303|gb|AAT41794.1; At1g16640 [A
 Ppa VRN1 18 1 NP 194894.2; DNA binding / transcription factor [Arabidopsis thaliana] >gi|24817269|emb|CAD56215.1; putative au
 Ppa VRN1 21 1 CAB79884.1; putative protein [Arabidopsis thaliana] >gi|3281862|emb|CAA19757.1; putative protein [Arabidopsis th
 Ppa VRN1 24 1 NP 683415.2; DNA binding / transcription factor [Arabidopsis thaliana]
 Smo VRN1 5 1 NP 192068.1; DNA binding / transcription factor [Arabidopsis thaliana] >gi|37202022|gb|AAQ89626.1; At4g01580 [A
 BAB01692.1; unnamed protein product [Arabidopsis thaliana]
 NP 188526.2; DNA binding / transcription factor [Arabidopsis thaliana] >gi|30793831|gb|AAP40368.1; unknown prot

NP 910293.1; unknown protein [Oryza sativa (japonica cultivar-group)] >gi|7363291|dbj|BAA93035.1; unknown prote
 BAD81380.1; unknown protein [Oryza sativa (japonica cultivar-group)]
 BAD35642.1; transcriptional factor B3-like [Oryza sativa (japonica cultivar-group)] >gi|51090807|dbj|BAD35285.1
 XP 470571.1; Unknown protein [Oryza sativa] >gi|15217278|gb|AAK92622.1; Unknown protein [Oryza sativa]
 AAW56868.1; unknown protein [Oryza sativa (japonica cultivar-group)]
 XP 463193.1; putative auxin response factor [Oryza sativa
 BAD37802.1; hypothetical protein [Oryza sativa (japonica cultivar-group)](japonica cultivar-group) >gi|28201557|gb|AAO34495.1
 AAT77045.1; putative transcription factor(auxin response factor) [Oryza sativa (japonica cultivar-group)]
 XP 481619.1; hypothetical protein [Oryza sativa (japonica cultivar-group)] >gi|38637418|dbj|BAD03676.1; hypothe
 XP 481612.1; auxin response factor-like [Oryza sativa (japonica cultivar-group)] >gi|38637411|dbj|BAD03669.1; a
 XP 472007.1; OSJNBa0020I02.7 [Oryza sativa (japonica cultivar-group)] >gi|38346493|emb|CAE02099.2; OSJNBa0020I0
 AAX96729.1; B3 DNA binding domain, putative [Oryza sativa (japonica cultivar-group)] >gi|77549091|gb|ABA91888.1;
 XP 463206.1; putative auxin response factor [Oryza sativa (japonica cultivar-group)] >gi|28201561|gb|AAO34499.1

 AAX47180.1; VERNALISATION 1 b [Pisum sativum]
 AAX47179.1; VERNALISATION 1 a [Pisum sativum]

 were removed from tree.



10,000