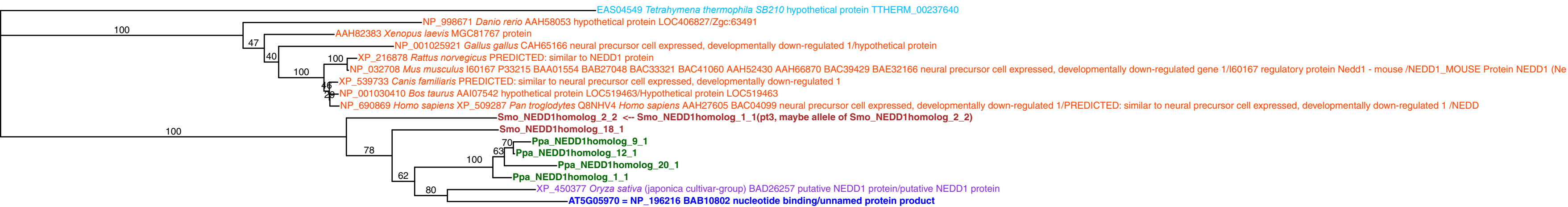


NEDD1 (AT5G05970): global tree  
 File name: NEDD1.njtree1.svg  
 179 aa residues 17 OTU included.  
 Results of 2 partial trees included  
 Assemble Job Id: Kic86M  
 Tree job id: Su5jMz  
 BP values out of 100  
 Analyzed by tkmurata@nibb.ac.jp  
 Date: Wed Jul 05 20:03:32 JST 2006

# NEDD1 (or GCP-WD, novel component of gamma-tubulin complex)



0.100