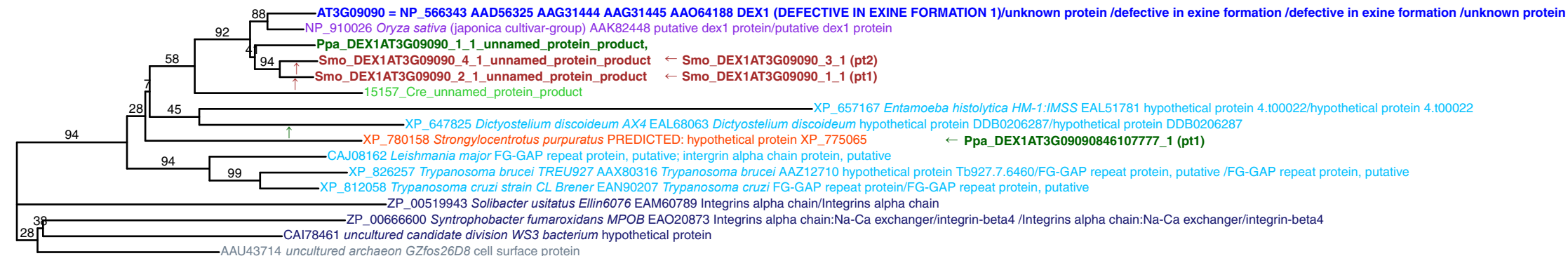


DEX1 (AT3G09090): global tree
 File name: DEX1.njtree2.svg
 143 aa residues 16 OTU included.
 Results of two partial trees included
 Assemble Job Id: ORuNXk
 Tree job id: TGNBZg
 BP values out of 100
 Analyzed by saori@nibb.ac.jp
 Date: Thu Sep 21 15:31:10 JST 2006

lcl|Smo_DEX1AT3G09090918531167_1 (same to contig Smo_2_1)
 lcl|Ppa_DEX1AT3G09090846107777_1 (pt1)

lcl|Smo_DEX1AT3G09090_3_1 (pt2)
 lcl|Smo_DEX1AT3G09090_1_1 (pt1)



0.100