

DRP1A(At5g42080): global tree
 File name: DRP1A.njtree0.svg
 352 aa residues 47 OTU included.
 Results of 1 partial trees included. **Ppa_DRP1A_16_1, Smo_DRP1A_1_1.**
 Assemble Job Id: IFY1Pf
 Tree job id: xgY2JN
 BP values out of 100
 Analyzed by ku-bo@nibb.ac.jp
 Date: Sat Jun 17 17:16:22 JST 2006

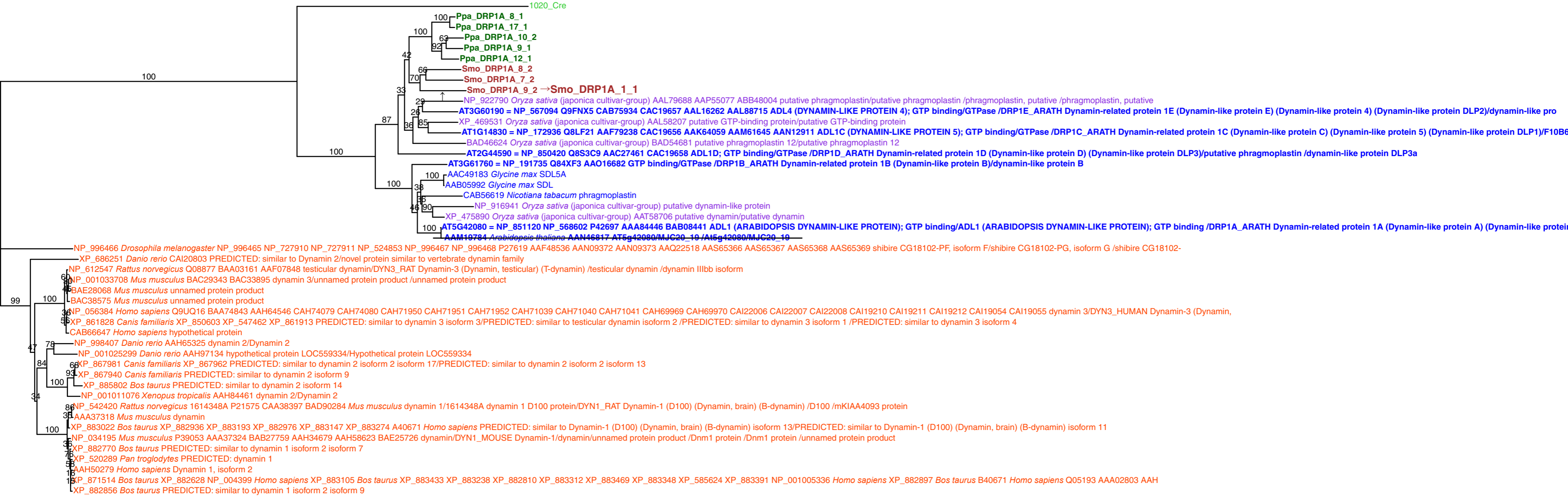
Ppa DRP1A 16 1 (identical to Ppa_DRP1A_12_1)
 NP 850419.1|[Arabidopsis thaliana] CAC19659.1| (identical to AT2G44590)
 NP 850418.1|[Arabidopsis thaliana] AAL92169.1| (identical to AT2G44590)
 AAF22292.1|[Arabidopsis thaliana] (identical to AT3G60190)
 AAF22293.1|[Arabidopsis thaliana] (identical to AT1G14830)
 AAB63528.1|[Arabidopsis thaliana] (identical to AT5G42080)
 AAM65743.1|[Arabidopsis thaliana] (identical to AT5G42080)
 CAB71106.1|[Arabidopsis thaliana] (identical to AT3G61760)
 AAL92170.1|[Arabidopsis thaliana] (identical to AT1G14830)

comments
 result of bl2seq(blastN) of Ppa_DRP1A_12_1 and Ppa_DRP1A_16_1
 Score = 1652 bits (859), Expect = 0.0
 Identities = 908/917 (99%), Gaps = 3/917 (0%)

 result of bl2seq(blastN) of Smo_DRP1A_1_1 and Smo DRP1A 9 2
 Score = 3857 bits (2006), Expect = 0.0
 Identities = 2095/2132 (98%), Gaps = 9/2132 (0%)

 Score = 189 bits (98), Expect = 5e-44
 Identities = 133/146 (91%), Gaps = 2/146 (1%)

were removed from this tree.



0.100